

Mark Lewis Portfolio: A Film Art Retrospective

AN ONLINE SUPPLEMENT TO THE SUMMER 2009 PRINT EDITION OF CANADIAN ART



Mark Lewis on the Los Angeles set of *Nathan Phillips Square, A Winter's Night, Skating 2009*
Photo Hubert Kang

Mark Lewis on the Los Angeles set of *Nathan Phillips Square, A Winter's Night, Skating 2009* Photo Hubert Kang

For this year's Venice Biennale, the London-based Canadian artist [Mark Lewis](#) refitted the [Canada Pavilion](#) as a sculptural cinema house screening four of his latest films. In her cover story, "[So Much to See](#)," for the Summer 2009 print edition of Canadian Art, art critic Nancy Tousley offers some of the backstory on Lewis' work leading up to the Biennale exhibition. Here, we complete that picture with an exclusive 23-slide portfolio from Lewis' film works—starting with 1995's *Two Impossible Films* and leading right up to his Venice installation. (For more on Lewis, check out [Bernard Fibicher's feature article on Lewis' work](#) that appeared in the Fall 2003 edition of Canadian Art.)

[Page 2 »](#)

MARK LEWIS PORTFOLIO: AN ONLINE SUPPLEMENT TO THE
SUMMER 2009 PRINT EDITION OF CANADIAN ART



Mark Lewis *Two Impossible Films* 1995 Film still Courtesy Mark Lewis/Monte Clark Gallery/Clark & Faria/galerie serge le borgne, Paris © Mark Lewis

« [Page 1](#) [First page](#) [Page 3](#) »

MARK LEWIS PORTFOLIO: AN ONLINE SUPPLEMENT TO THE
SUMMER 2009 PRINT EDITION OF CANADIAN ART

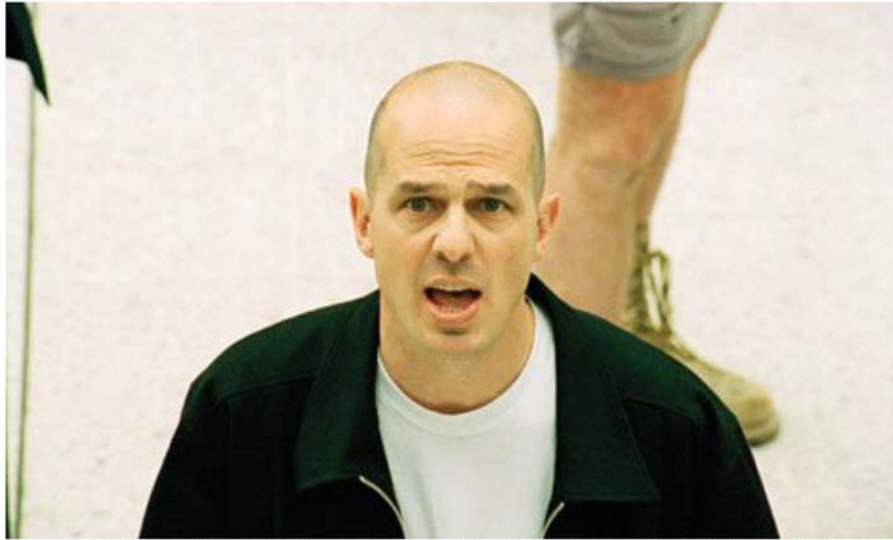


Mark Lewis *The Pitch* 1998 Film still Courtesy Mark Lewis/Monte Clark Gallery/Clark & Faria/galerie serge le borgne, Paris © Mark Lewis

« [Page 2](#) [First page](#) [Page 4](#) »



MARK LEWIS PORTFOLIO: AN ONLINE SUPPLEMENT TO THE
SUMMER 2009 PRINT EDITION OF CANADIAN ART



Mark Lewis *The Pitch* 1998 Film still Courtesy Mark Lewis/Monte Clark Gallery/Clark & Faria/galerie serge le borgne, Paris © Mark Lewis

« [Page 3](#) [First page](#) [Page 5](#) »

—

MARK LEWIS PORTFOLIO: AN ONLINE SUPPLEMENT TO THE
SUMMER 2009 PRINT EDITION OF CANADIAN ART



Mark Lewis *Peeping Tom* 2000 Film still Courtesy Mark Lewis/Monte Clark Gallery/Clark & Faria/galerie serge le borgne, Paris © Mark Lewis

« [Page 4](#) [First page](#) [Page 6](#) »

MARK LEWIS PORTFOLIO: AN ONLINE SUPPLEMENT TO THE
SUMMER 2009 PRINT EDITION OF CANADIAN ART



Mark Lewis *North Circular* 2000 Film still Courtesy Mark Lewis/Monte Clark Gallery/Clark & Faria/galerie serge le borgne, Paris © Mark Lewis

[« Page 5](#) [First page](#) [Page 7 »](#)

MARK LEWIS PORTFOLIO: AN ONLINE SUPPLEMENT TO THE
SUMMER 2009 PRINT EDITION OF CANADIAN ART



Mark Lewis *North Circular* 2000 Film still Courtesy Mark Lewis/Monte Clark Gallery/Clark & Faria/galerie serge le borgne, Paris © Mark Lewis

[« Page 6](#) [First page](#) [Page 8 »](#)

MARK LEWIS PORTFOLIO: AN ONLINE SUPPLEMENT TO THE
SUMMER 2009 PRINT EDITION OF CANADIAN ART



Mark Lewis *Algonquin Park*, September 2001 Film still Courtesy Mark Lewis/Monte Clark Gallery/Clark & Faria/galerie serge le borgne, Paris © Mark Lewis

[« Page 7](#) [First page](#) [Page 9 »](#)

SUMMER 2009 PRINT EDITION OF CANADIAN ART



Mark Lewis *Children's Games, Heygate Estate* 2002 Film still Courtesy Mark Lewis/Monte Clark Gallery/Clark & Faria/galerie serge le borgne, Paris © Mark Lewis

[« Page 8](#) [First page](#) [Page 10 »](#)

MARK LEWIS PORTFOLIO: AN ONLINE SUPPLEMENT TO THE
SUMMER 2009 PRINT EDITION OF CANADIAN ART



Mark Lewis *Algonquin Park, Early March 2002* Film still Courtesy Mark Lewis/Monte Clark Gallery/Clark & Faria/galerie serge le borgne, Paris © Mark Lewis

[« Page 9](#) [First page](#) [Page 11 »](#)

MARK LEWIS PORTFOLIO: AN ONLINE SUPPLEMENT TO THE
SUMMER 2009 PRINT EDITION OF CANADIAN ART



Mark Lewis *Algonquin Park, Early March 2002* Film still Courtesy Mark Lewis/Monte Clark Gallery/Clark & Faria/galerie serge le borgne, Paris © Mark Lewis

[« Page 10](#) [First page](#) [Page 12 »](#)

MARK LEWIS PORTFOLIO: AN ONLINE SUPPLEMENT TO THE
SUMMER 2009 PRINT EDITION OF CANADIAN ART



Mark Lewis *Gladwell's Picture Window* 2005 Film still Courtesy Mark Lewis/Monte Clark Gallery/Clark & Faria/galerie serge le borgne, Paris © Mark Lewis

[« Page 11](#) [First page](#) [Page 13 »](#)

MARK LEWIS PORTFOLIO: AN ONLINE SUPPLEMENT TO THE
SUMMER 2009 PRINT EDITION OF CANADIAN ART



Mark Lewis *Rear Projection (Molly Parker)* 2006 Film still Courtesy Mark Lewis/Monte Clark Gallery/Clark & Faria/galerie serge le borgne, Paris © Mark Lewis

[« Page 12](#) [First page](#) [Page 14 »](#)

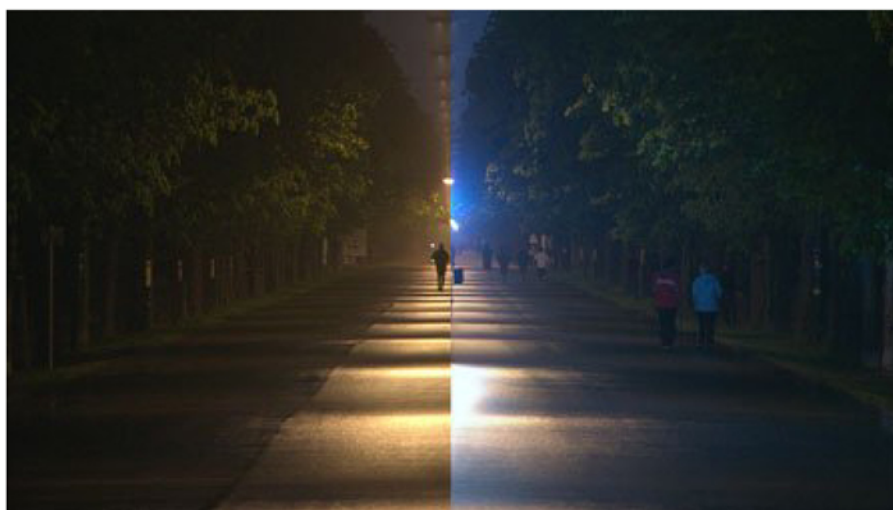
MARK LEWIS PORTFOLIO: AN ONLINE SUPPLEMENT TO THE
SUMMER 2009 PRINT EDITION OF CANADIAN ART



Mark Lewis *Isosceles* 2007 Film still Courtesy Mark Lewis/Monte Clark Gallery/Clark & Faria/galerie serge le borgne, Paris © Mark Lewis

[« Page 13](#) [First page](#) [Page 15 »](#)

MARK LEWIS PORTFOLIO: AN ONLINE SUPPLEMENT TO THE
SUMMER 2009 PRINT EDITION OF CANADIAN ART



Mark Lewis *Prater Hauptallee, Dawn and Dusk* 2008 Film still Courtesy Mark Lewis/Monte Clark Gallery/Clark & Faria/galerie serge le borgne, Paris © Mark Lewis

[« Page 14](#) [First page](#) [Page 16 »](#)

MARK LEWIS PORTFOLIO: AN ONLINE SUPPLEMENT TO THE
SUMMER 2009 PRINT EDITION OF CANADIAN ART



Mark Lewis *Cinema Museum* 2008 Film still Courtesy Mark Lewis/Monte Clark Gallery/Clark & Faria/galerie serge le borgne, Paris © Mark Lewis

[« Page 15](#) [First page](#) [Page 17 »](#)

MARK LEWIS PORTFOLIO: AN ONLINE SUPPLEMENT TO THE
SUMMER 2009 PRINT EDITION OF CANADIAN ART



Mark Lewis *The Fight* 2008 Film still Courtesy Mark Lewis/Monte Clark Gallery/Clark & Faria/galerie serge le borgne, Paris © Mark Lewis Produced by the Research Laboratory for Film & Television/Bettina Henkel—Academy of Fine Arts Vienna

[« Page 16](#) [First page](#) [Page 18 »](#)

MARK LEWIS PORTFOLIO: AN ONLINE SUPPLEMENT TO THE
SUMMER 2009 PRINT EDITION OF CANADIAN ART



Mark Lewis *The Fight* 2008 Film still Courtesy Mark Lewis/Monte Clark Gallery/Clark & Faria/galerie serge le borgne, Paris © Mark Lewis Produced by the Research Laboratory for Film & Television/Bettina Henkel—Academy of Fine Arts Vienna

[« Page 17](#) [First page](#) [Page 19 »](#)

MARK LEWIS PORTFOLIO: AN ONLINE SUPPLEMENT TO THE
SUMMER 2009 PRINT EDITION OF CANADIAN ART



Mark Lewis *TD Centre, 54th Floor* 2009 Film still Courtesy Mark Lewis/Monte Clark Gallery/Clark & Faria/galerie serge le borgne, Paris © Mark Lewis Commissioned by the Justina M. Barnicke Gallery, Hart House, University of Toronto / Mark Lewis Studio Inc. in co-production with the National Film Board of Canada

[« Page 18](#) [First page](#) [Page 20 »](#)

MARK LEWIS PORTFOLIO: AN ONLINE SUPPLEMENT TO THE
SUMMER 2009 PRINT EDITION OF CANADIAN ART



Mark Lewis *Cold Morning* 2009 Film still Courtesy Mark Lewis/Monte Clark Gallery/Clark & Faria/galerie serge le borgne, Paris © Mark Lewis Commissioned by the Justina M. Barnicke Gallery, Hart House, University of Toronto / Mark Lewis Studio Inc. in co-production with the National Film Board of Canada

[« Page 19](#) [First page](#) [Page 21 »](#)

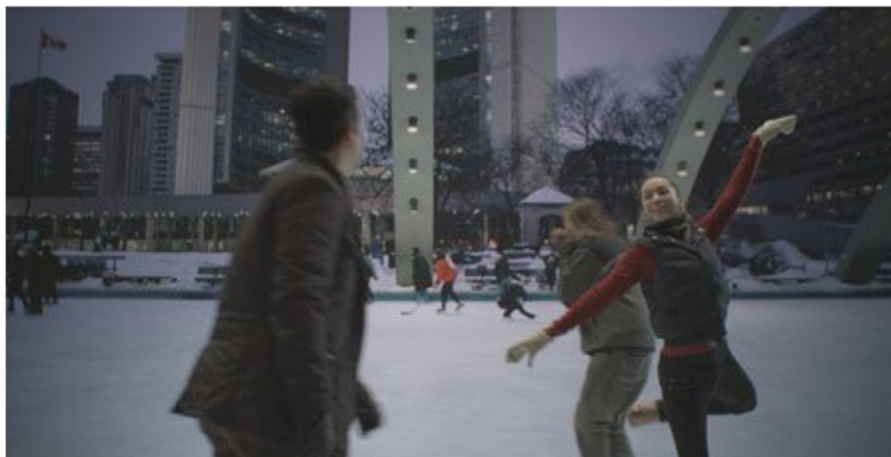
MARK LEWIS PORTFOLIO: AN ONLINE SUPPLEMENT TO THE
SUMMER 2009 PRINT EDITION OF CANADIAN ART



Mark Lewis *Cold Morning* 2009 Film still Courtesy Mark Lewis/Monte Clark Gallery/Clark & Faria/galerie serge le borgne, Paris © Mark Lewis Commissioned by the Justina M. Barnicke Gallery, Hart House, University of Toronto / Mark Lewis Studio Inc. in co-production with the National Film Board of Canada

[« Page 20](#) [First page](#) [Page 22 »](#)

MARK LEWIS PORTFOLIO: AN ONLINE SUPPLEMENT TO THE
SUMMER 2009 PRINT EDITION OF CANADIAN ART



Mark Lewis *Nathan Phillips Square, A Winter's Night, Skating* 2009 Film still Courtesy Mark Lewis/Monte Clark Gallery/Clark & Faria/galerie serge le borgne, Paris © Mark Lewis
Commissioned by the Justina M. Barnicke Gallery, Hart House, University of Toronto / Mark Lewis Studio Inc. in co-production with the National Film Board of Canada

[« Page 21](#) [First page](#) [Page 23 »](#)

MARK LEWIS PORTFOLIO: AN ONLINE SUPPLEMENT TO THE
SUMMER 2009 PRINT EDITION OF CANADIAN ART



Mark Lewis *Nathan Phillips Square, A Winter's Night, Skating* 2009 Film still Courtesy Mark Lewis/Monte Clark Gallery/Clark & Faria/galerie serge le borgne, Paris © Mark Lewis
Commissioned by the Justina M. Barnicke Gallery, Hart House, University of Toronto / Mark Lewis Studio Inc. in co-production with the National Film Board of Canada

[« Page 22](#) [First page](#)